

SR5719

ROUGH TERRAIN TELEHANDLER



- Full-time 4 wheel drive
- Fully enclosed cab
- Power assisted steering
- Proportional joystick
- Simple to operate & maintain

 **snorkel**
www.snorkellifts.com

ROUGH TERRAIN TELEHANDLER

SR5719

CAPABILITIES SR5719

Max. lift capacity	2,600kg
Max. lift height (A)	5.79m
Max. forward reach	3.2m

DIMENSIONS

Overall width (B)	1.89m
Height (C)	1.93m
Length to fork face (D)*	4.03m
Wheelbase	2.5m
Ground clearance	220mm

PERFORMANCE

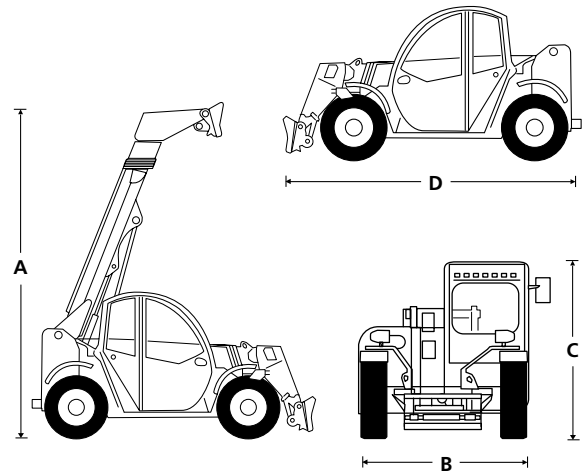
Max. drive speed	27km/h
Raise/lower time	6.9/5 sec
Frame leveling	n/a
Hydraulic flow (per minute)	70L
Hydraulic pressure	230bar
Hydraulic oil capacity	70L
Fuel capacity	80L
Outside turning radius	3.25m
Tires	12 x 16.5"

POWER

Power source	Yamahar 70.3hp Tier 4 Final diesel
--------------	------------------------------------

WEIGHT

Weight	4,700kg
--------	---------



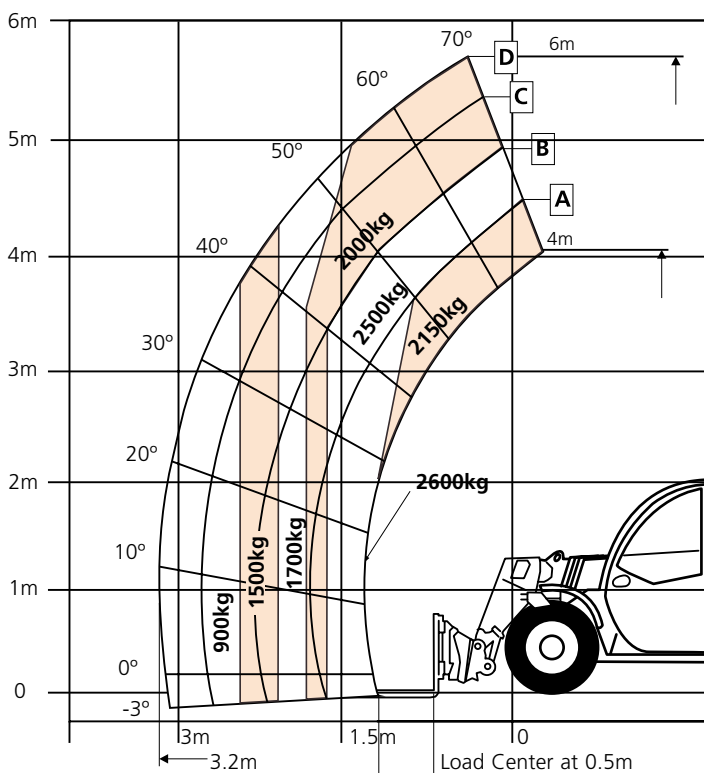
STANDARD FEATURES

- Full time 4 wheel drive
- Easy access to components for servicing
- 4 wheel steer
- Selectable front, crab & coordinated steering modes
- Auxiliary hydraulic circuit on the boom
- Variable speed hydrostatic drive
- Fender (set of 4)
- Fully enclosed cab with air conditioning
- Proportional joystick
- Illuminated gauge and switch panels
- Color LCD display with machine & engine diagnostics
- Adjustable suspension seat
- Block heater
- Flashing beacon
- Constant flow
- Road lights
- Fixed 1.21m carriage
- 1.21m pallet forks
- Work lights on boom (2)
- 2 year parts & labor, 5 year structural warranty
- ANSI compliant

OPTIONS

- Multiple options for carriages, tires and fork tines
- Cold weather synthetic oil
- Swivel hook
- Hydraulic tank heater
- Battery heater
- Universal skidsteer attachment
- CSA compliant

LOAD CHART



snorkel

www.snorkellifts.com

P.O. Box 1160
 St. Joseph, MO 64502-1160, USA
 Tel: 1 (785) 989-3000
 Toll-free: 1 (800) 255-0317
 Fax: 1 (785) 989-3070
 Email: sales.usa@snorkellifts.com