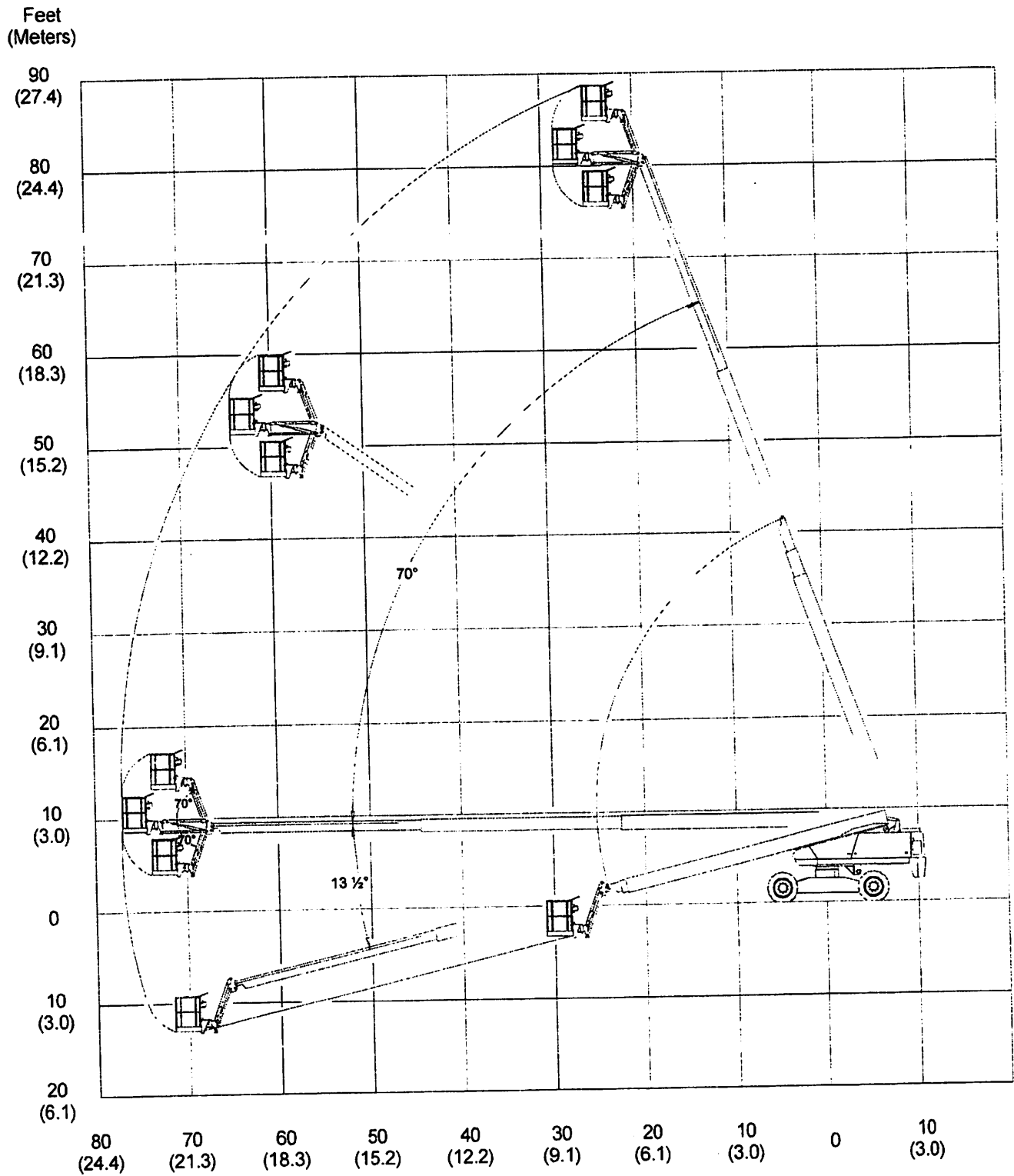


Working Envelope – TB85J



**General Specifications – TB85J**

**Aerial Platform**

Working height	90' 11" (27.7 m)
Maximum platform height	84' 11" (25.8 m)
Horizontal reach	76' 8" (23.4 m)
Main boom	
Articulation	-13.5° to +70°
Extension	44' (13.4 m)
Jib boom	
Articulation	-70° to +70°
Turntable rotation	360° continuous
Turning radius, 4 wheel steer	7' 10" (2.4 m)
Tail swing	78.5" (1.9 m)
Wheelbase	10' (3 m)
Ground clearance	13" (33 cm)
Maximum wheel load	19,300 lbs (8,770 kg)
Maximum ground pressure	99 psi (6.9 kg/cm <sup>2</sup> )
Weight, EVW	
Approximate	37,600 lbs (17,100 kg)
Width	8' 6" (2.5 m)
Stowed length	36' 10" (11.2 m)
Stowed length, tucked stow	36' 7.5" (11.1 m)
Stowed height	9' 8" (2.9 m)

**Platform**

Dimensions	
Standard Aluminum	30" x 92" (76 cm x 244 cm)
Optional Steel	30" x 60" (76 cm x 152 cm)
Optional Aluminum	30" x 60" (76 cm x 152 cm)
Rated work load	
Steel 30" x 60"	500 lb (272 kg)
Aluminum 30" x 60"	600 lb (294 kg)
Aluminum 30" x 92"	500 lb (272 kg)
Rotation	170 degrees
Maximum number of occupants	2 people
Optional AC generator	110 V
Optional AC generator	220 V
Optional AC generator	220 V, 3-phase, 12 kw
Optional Welder	

**Function Speed**

Turntable rotation	
Booms retracted	90 to 100 seconds
Booms extended	190 to 220 seconds
Main boom	
Up	
Booms retracted	65 to 75 seconds
Booms extended	100 to 120 seconds
Down	
Booms retracted	60 to 70 seconds
Booms extended	80 to 95 seconds
Extend	80 to 90 seconds
Retract	60 to 70 seconds

**Jib**

Up	25 to 35 seconds
Down	25 to 35 seconds
Platform rotation	16 to 20 seconds
Drive	
High, booms stowed	3.0 mph (4.8 km/h)
Mid, booms stowed	1.5 mph (2.4 km/h)
Low, booms raised/extended	0.6 mph (1 km/h)

**Drive System**

Standard	Four wheel drive
Gradeability – theoretical	45%

**Tires**

Foam filled	15-625NHS, 16 ply
-------------	-------------------

**Electrical System**

Voltage	12 V DC negative chassis ground
Source	
Gas engine	One -12 V 550 CCA battery
Diesel engine	Two - 12 V 550 CCA batteries
Fluid recommended	distilled water

**Hydraulic System**

Maximum pressure	2,800 psi (19,305 kPa)
Reservoir capacity	40 US gal (151 l)
System capacity	65 US gal (246 l)
Maximum operating temperature	200°F (93°C)
Hydraulic fluid recommended	
Above 10°F (-13°C)	Mobil DTE-13M (ISO VG32)
Below 10°F (-13°C)	Mobil DTE-11M (ISO VG15)

**Engine**

Diesel	Cummins B3.3
Diesel	Deutz F4L-2011F
Gasoline and/or LPG	General Motors 2.4

**Fuel Tank Capacity**

Gasoline or diesel	54 US gal (204 l)
LPG	43.5 lbs (19.7 kg)
Dual fuel gasoline	54 US gal (204 l)
	43.5 lbs (19.7 kg)

**Ambient Air Temperature Operating Range**

Fahrenheit	0°F to 110°F
Celsius	-18°C to 43°C

**Maximum Wind Speed**

Gust or steady	28 mph (45 km/h)
----------------	------------------