



# Model

# 1044C-54 Series II

## TELEHANDLER

### Performance

#### Rated Capacity

10,000 lb (4,536 kg)

#### Maximum Lift Height

54 ft (16.5 m)

#### Frame Leveling

10 degrees

#### Lift Speed (boom retracted, no load)

Up: 15.6 sec  
Down: 14.6 sec

#### Boom Speed (no load)

Extend: 15.2 sec  
Retract: 11.3 sec

#### Travel Speed Forward

22 mph (35 kmph) max.

#### Drawbar Pull (loaded)

21,700 lb (9,843 kg)

#### Operating Weight With Carriage and Forks

32,697 lb (14,931 kg)

#### Forward Reach

45 ft (13.7 m)

#### Horizontal Load Placement

80 in. (2.0 m)

### Standard Specifications

#### Engine

Make and Model	John Deere 4045TF
Fuel	No. 2 Diesel
Cycles	4
No. of Cylinders	4
Displacement	276 cu in (4.5 L)
Rated Speed	2,500 rpm
Max. Gross BHP	115 hp (85 kW)
Fuel Tank	36 gal (136 L)
Engine Block Heater	

#### Engine Filters

Two-stage dry air cleaner – centrifugal pre-cleaner with continuous dust ejector plus replaceable primary dry filter element and safety element.

Visual service indicator.

Replaceable spin-on fuel filter. Full-flow replaceable spin-on engine oil filter.

#### Electrical System

Voltage: 12V

Alternator: 95 amp

Battery: 925 cold cranking amps at 0°F

#### Transmission

Modulated powershift.

4-speed forward and 3-speed reverse.

#### Axles

Full-time planetary 4-wheel drive.  
Oscillating rear axle.

#### Service Brakes

Hydraulically actuated inboard wet disc brakes.

#### Parking Brakes

Spring applied hydraulic release brake with transmission declutch feature.

#### Tires

Standard: Hydro fill 14.00 x 24 — 12 ply

#### Cab

Certified ROPS/FOPS structure.

Suspension seat

Steering wheel mounted horn.

Rear view mirrors.

#### Steering

4-wheel circle, 4-wheel crab, 2-wheel front.

#### Instruments

Hydraulic oil temperature, fuel level, tachometer, and hourmeter gauges.

Warning indicators for transmission oil temperature, hydraulic oil temperature, engine oil pressure, alternator charging, air filter restriction, hydraulic oil filter restriction, and low brake pressure.

Indicators for parking brake and RAS System.

#### Controls

Multi-function, fully proportional pilot operated joystick controls for boom functions, carriage tilt, auxiliary control, frame leveling, and horizontal load placement system.

#### Hydraulic System

Load sensing dual gear pumps.

33.5 gal (127 L) system capacity.

#### Front Outriggers

Axle mounted high clearance outriggers allow frame leveling without changing stance.

#### Auxiliary Hydraulics

Used for all attachments equipped with cylinders or other hydraulic components. Consists of valves, controls and hydraulic lines.

### Accessories & Options

#### Enclosed All Weather Cab

#### Work Lights

#### Road Lights

#### Rotating Beacon

#### Tire Options

Foam-filled  
Rock Lug

#### Second Auxiliary Hydraulic Line

#### Air Conditioning

#### Extra Battery

### Attachments

#### Standard Carriage

50 in. (1.3 m) or 74 in. (1.9 m)

#### ± 10° Side Tilt Carriage

50 in. (1.3 m) or 74 in. (1.9 m)

#### ± 45° Swing Carriage

72 in. (1.8 m)

#### Pallet Forks

2 x 5 x 48 in.  
(51 mm x 127 mm x 1.2 m) or  
2 x 5 x 60 in.  
(51 mm x 127 mm x 1.5 m)

#### Lumber Forks

1.75 x 7 x 60 in.  
(45 mm x 178 mm x 1.5 m)

#### Block Forks

2 x 2 x 48 in.  
(51 mm x 51 mm x 1.2 m)

#### Truss Boom With or Without Winch

10 ft (3.0 m)

#### 8 ft (2.4 m) Tower

#### Light Material Bucket

1.25 cu yd (0.95 m<sup>3</sup>) capacity  
96 in. (2.4 m) wide

#### Hydraulic Fork Position Carriage

50 in. (1.3 m)  
Single and dual fork options

#### Lifting Hook

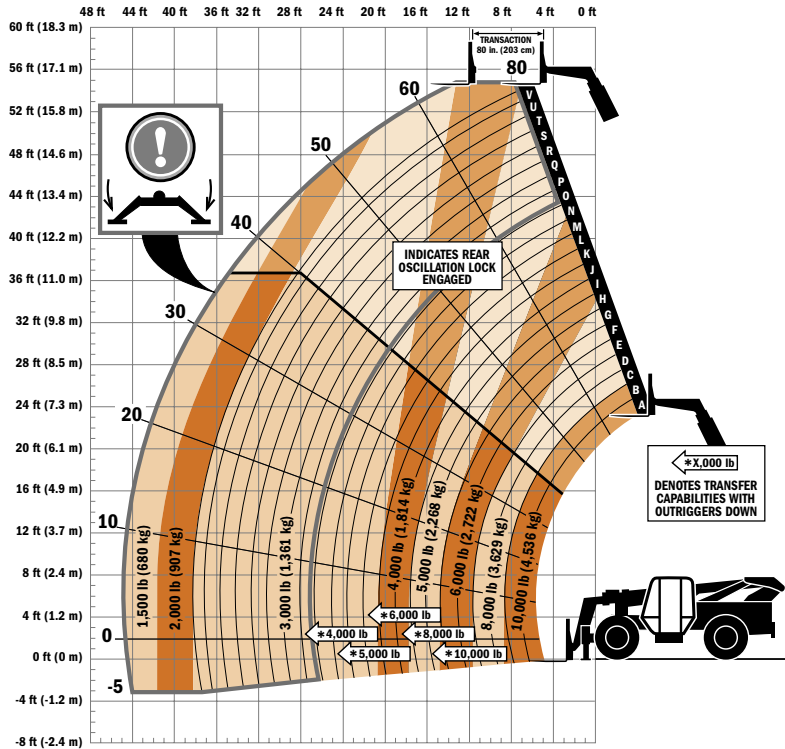
#### Fork Mounted Work Platform



# Model 1044C-54 Series II TELEHANDLER

## Dimensions

Length (less forks)	246 in. (6.24 m)
Width	101 in. (2.57 m)
Height	97 in. (2.46 m)
Wheelbase	124 in. (3.14 m)
Ground Clearance	16 in. (406 mm)
Outside Turning Radius	170 in. (4.32 m)
Maximum Reach from Front Tires to 24 in. (609 mm) Load Center	45 ft (13.7 m)



CAPACITIES SHOWN DEPICT FULL BOOM EXTENSION PRIOR TO TRANSFER. AT FULL TRANSFER EXTENSION, CAPACITIES AT ANY DISTANCE OUT ARE 70% OF RETRACTED TRANSFER VALUES.

## IMPORTANT

Rated lift capacities shown are with machine equipped with carriage and pallet forks. The machine must be level on a firm surface with undamaged, properly inflated tires. Machine specifications and stability are based on rated lift capacities at specific boom angles and boom lengths. (If specifications are critical, the proposed application should be discussed with your dealer.)

DO NOT exceed rated lift capacity loads, as unstable and dangerous machine conditions will result.

DO NOT tip the machine forward to determine the allowable load.

Use only JLG approved attachments with proper material handler model/attachment load capacity charts displayed in the operator's cab. OSHA requires all rough terrain forklift operators be trained according to OSHA 29 CFR 1910.178 (1).



### JLG Industries, Inc.

1 JLG Drive  
McConnellsburg, PA 17233-9533  
Telephone 717-485-5161  
Toll-free in US 877-JLG-LIFT  
Fax 717-485-6417  
[www.jlg.com](http://www.jlg.com)

An Oshkosh Corporation Company

Due to continuous product improvements, JLG Industries reserves the right to make specification and/or equipment changes without prior notification. This machine meets or exceeds ASME B56.6-2005 as originally manufactured for intended applications.

Form No.: SS-L1044C-54-0405-10M  
Part No.: 3132504  
R060805  
Printed in USA